

HANDBOOK FOR INTERNATIONAL STUDENTS KIROV STATE MEDICAL UNIVERSITY

KIROV 2024

Welcoming Words

Welcome to Kirov State Medical University, one of the youngest and progressive medical universities of Russia!

Found in 1987, the University has become one of the leading medical schools of the country due to highly qualified staff, their hard work and dedication.

Kirov State Medical University is truly an international university since more than 500 foreign students from 39 countries are studying medicine here. We achieved cooperation agreements with 14 foreign universities and actively participate in programs of international exchanges.

The University provides all the conditions for balanced professional and personal development: modern educational equipment, medical simulation center, computer labs, as well as sports, dance, reading and speaking clubs and so on.

Qualified teaching staff of the University are recognized by national ratings, contests and conferences. Thus, in 2016, the University was included in TOP-10 of the best universities in Russia. In 2021, KSMU was 9 in the local rating of the Volga Federal District. In 2022-2023, the University was included into the national rating by Interfax. In December 2023 the University received International Accreditation.

Nowadays, Kirov State Medical University is the modern, rapidly developing and future-oriented university, the largest scientific and educational medical complex of Kirov region. Up to date, about 3000 students are getting their medical education in our university.

I warmly welcome everyone who is aimed at starting their brilliant career in medicine!



[Leo Mikhaylovich Zheleznov](#)

Rector of Kirov State Medical University
Doctor of Medical Sciences
Professor

TABLE OF CONTENTS

01



About Kirov
State Medical
University

02



Migration
Rules

03



Student
documents

04



Life in Kirov,
Russia

05

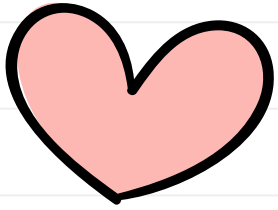


To-do list

06



Useful Contacts

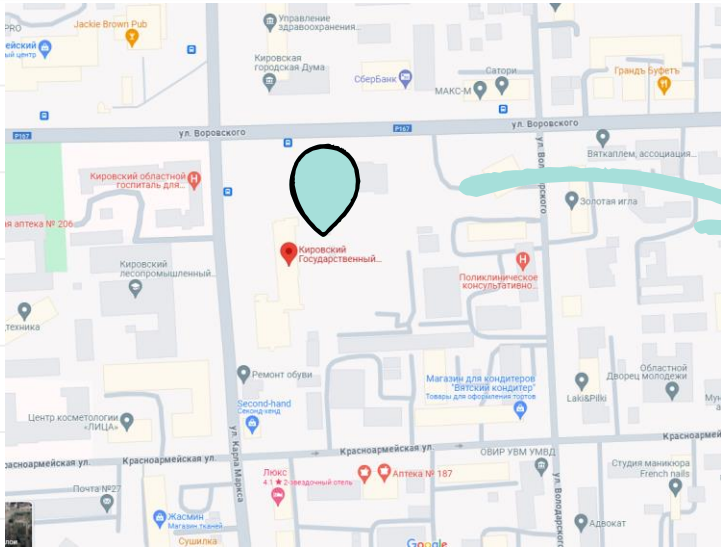


“Arte et humanitate,
labore et scientia.”

Latin maxim



Federal State Budgetary Educational Institution of Higher Education "Kirov State Medical University" of the Ministry of Healthcare of the Russian Federation



01

Main academic building of Kirov SMU Karl Marx Str 112 Kirov 610027

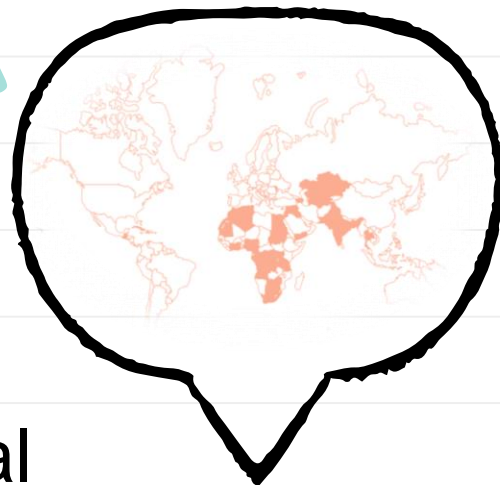




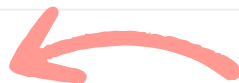
3000 students
10 study programs



38 countries



500 international
students



University Campus



Building 2
38 Proletarskaya St



Building 1
137 Karl Marx St



Building 3
112 Karl Marx St



- 4 flat-type dormitories in the city center
- Updated and modernized equipment
- Scientific library fund over 200 thousand items



Migration rules



Migration Card

- Necessary for all international students (with the exception of citizens of the Republic of Belarus and holders of temporary residence permits, permanent residence permits and student residence permits);
- issued free of charge upon every entry to the Russian Federation at official border crossings;
- necessary for your legal stay in the Russian Federation.

Visa

- Necessary for all international students for whom a visa is obligatory.
- An initial visa is issued by consular services or Russian visa centres in your main country of residence and is valid for a single entry;
- the validity period of this visa does not exceed 90 days.
- Necessary for legally entering and living in the Russian Federation.

Migration Registration

- Necessary for legal stay throughout Russia.
- You must get registered every time you enter the Russian Federation
- or change your actual place of residence in Russia.
- We recommend submitting your documents for migration registration on the following working day after your arrival in Russia or the date when you actually change residence.

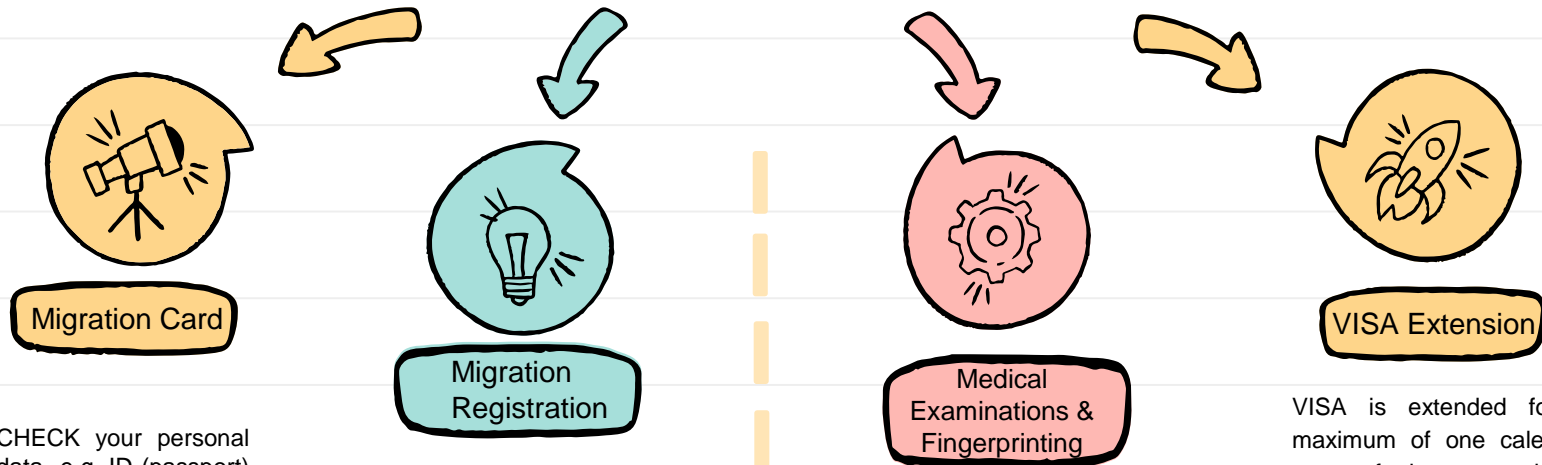
Medical Examinations, Fingerprinting and Official Photographing

According to Russian legislation, international students arriving in Russia for a period of more than 90 days must undergo a medical examination, fingerprinting and official photographing (within 90 days after their entry)

These services are provided free of charge!

ATTENTION

These services are subject to State tax (RUB)!



CHECK your personal data e.g. ID (passport) number and the purpose of your visit stated as "Education" (Учёба).

IN CASE you stay in a hotel or hostel, your previous registration with a dormitory or privately rented apartment is automatically cancelled. Upon returning, you **NEED** to get registered again **IMMEDIATELY**.

OBLIGATORY procedures for all international students. Medical tests are to be passed **ANNUALLY**, Fingerprinting just **ONCE**, upon arrival.

VISA is extended for a maximum of one calendar year; furthermore, it is necessary to extend it each year until the end of studies. Submit documents to extend your student visa no earlier than three months, but no later than 45 calendar days prior to the date when the initial visa expires.



Migration card



"Б" (Выезд/Departure)

Российская Федерация/ Russian Federation Республика Беларусь/ Republic of Belarus

Миграционная карта / Migration Card

Серия/ Serial: _____
№: _____

Фамилия/Surname (Family name): _____
Имя/Given name(s): _____
Отчество/Patronymic: _____

Дата рождения/Date of birth: _____
День/Day: _____ Месяц/Month: _____ Год/Year: _____

Пол/Sex: Муж./Male Жен./Female

Гражданство/Nationality: _____

Документ, удостоверяющий личность/ Passport or other ID: _____
Номер визы/ Visa number: _____

Цель визита (нужно подчеркнуть)/ Purpose of travel (to be underlined):
Служебный/Official, Туризм/Tourism, Коммерческий/Business, Учёба/Education, Работа/Employment, Частный/Private, Транзит/Transit

Срок пребывания/Duration of stay: _____

С/From: _____ До/To: _____

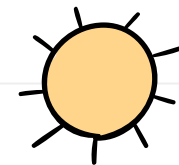
Служебные отметки/For official use only

Въезд в Российскую Федерацию/ Республику Беларусь/ Date of arrival in the Russian Federation/ Republic of Belarus: _____

Выезд из Российской Федерации/ Республики Беларусь/ Date of departure from the Russian Federation/Republic of Belarus: _____

32 ПУЧКОВО

- A migration card is a document that is issued to foreigners upon entry into the territory of another country for the purpose of studying.
- It is one of the main documents certifying the legal stay of a foreign student in the country and contains information about their identity, including full name, date of birth, citizenship, as well as the date of entry and the expected date of departure from the country.
- In case of loss or damage of the migration card, the foreign student must contact the Office for Visa and Registration Support to obtain a duplicate or restore the document.
- You will get your migration card in the airport when you arrive in Russia for the first time. You must keep it





Visa

- A visa for a foreign student is a permit to stay and study in another country issued by the state in which the student plans to study. A visa entitles temporary stay in this country and usually has a limited validity period, which depends on the duration of the studies.
- To get a visa for the first time, the student should receive an invitation from the University, which must be attached to the package of documents.
- To obtain a visa for a foreign student, the student must provide certain documentation to the embassy of the Russian Federation in your country. Visa is issued for a period of time. Upon arrival in Russia, students must apply all the documents to get their visa extended for a longer period.





“Green card”



The “green card” confirms the fact of successful passing the medical examination and the fingerprint procedure and provides international students with the opportunity to legalize and begin the educational process in Russia.

- Used to confirm the legal status in Russia
- Must be presented when visiting medical institutions, obtaining work etc.

MEDICAL EXAMINATION

A medical examination is a mandatory procedure during which the health status of international students is checked. This procedure usually includes a doctor's examination, blood tests, chest X-rays and other necessary checks. Medical examination must be done **EVERY YEAR** before getting and renewing the visa.

FINGERPRINTS PROCEDURE

The fingerprinting procedure, also known as biometric registration, is one of the important steps in the process of obtaining a student visa. This allows international students and their governments to establish the identity of the student and ensure security. Fingerprinting procedure is done only **ONCE**.

Medical Support



Medical insurance



According to the Russian legislation, any foreign citizen is obliged to obtain medical insurance. This document ensures free medical help of some doctors (specified in your policy) and in case of emergency.

Certificate of vaccination



During studies, you will be doing practical training in hospitals of Kirov. In order to be admitted into medical organisations, you must have Medical Certificate and Vaccination Records/ Immunisation Records with notarised translation into Russian. Vaccination Certificate must contain information about the following vaccines: measles, rubella, diphtheria, poliomyelitis, tetanus, hepatitis B

STUDENT'S DOCUMENTS

Student ID

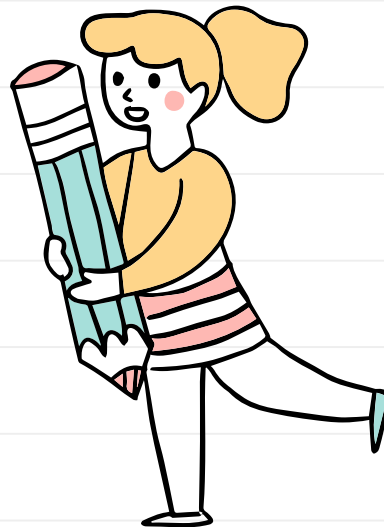
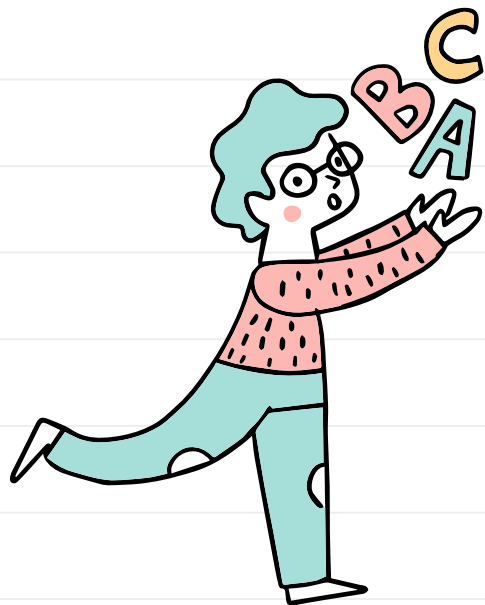
- Issued by your Dean's Office
- Confirms student's status
- Subject to prolongation by your Dean's Office every year
- If you've lost your student ID, you can ask for a replacement at your Dean's Office

E-pass

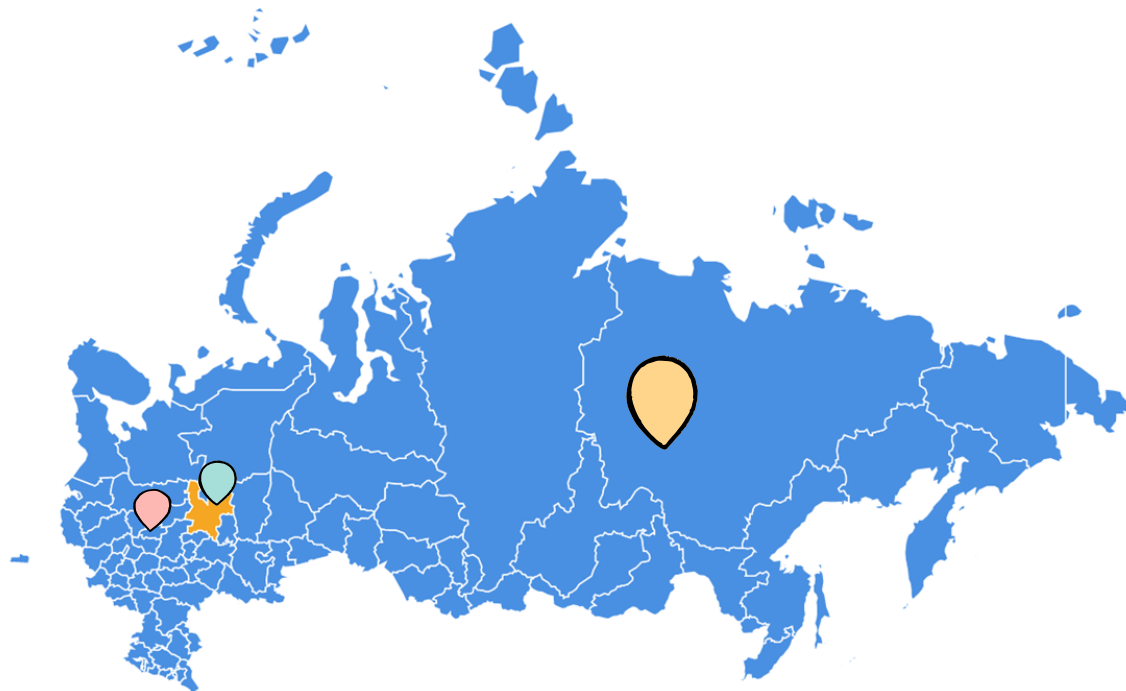
- Allows access to all Kirov State Medical University buildings and your dormitory

Student's record book

- Issued by your Dean's Office
- Keeps all your grades by semesters.
- If you've lost your student ID, you can ask for a replacement at your Dean's Office



LIFE IN RUSSIA



KIROV REGION, RUSSIA

You are here! Welcome!
Population 1,3 mil people



MOSCOW, RUSSIA

The capital and largest city of Russia
Population 13 mil people



SIBERIA, RUSSIA

S = 13,100,000 km²
Geographical region comprising all
of North Asia, from the Ural
Mountains in the west to the Pacific
Ocean in the east

LIFE IN KIROV



Mobile communication

Top cellular operators:

- Beeline
- Megafon
- MTS
- Теле2

Cellular and internet services cost between RUB 300 and 800 per month.



Useful apps

- Yandex.Maps - online maps
- Yandex.Transport - online timetable for public transport
- 2GIS - offline maps
- Uber - taxi services
- YandexGO - taxi services
- Delivery club - food delivery



Sights and attractions

Kirov is famed for its large number of cultural sites, museums, monuments, theatres and cinemas.

The following online resources to learn more about attractions:

- Afisha
- Tripadvisor
- Yandex.Travel



Currency exchange

Having cash in convertible currency (USD, EUR) for the first few weeks in Russia is recommended. Banks provide currency exchange services.

The major banks:

- Sberbank
- VTB
- Gazprombank

FOUR SEASONS IN RUSSIA

01 WINTER



02 SPRING



03 SUMMER



04 AUTUMN



RUSSIAN NATIONAL HOLIDAYS

FALL SEMESTER

SPRING SEMESTER

NOVEMBER
4

DECEMBER
31

JANUARY
7

FEBRUARY
23

MARCH
8

MAY
1 & 9

National Unity
Day

New Year Eve

Christmas Day

The Defender of
the Fatherland Day

International
Women's Day

Labor Day &
Victory Day

Flag hoisting, parades, fireworks, award ceremonies, singing patriotic songs and the national anthem, speeches by the President, entertainment and cultural programs

Gift-giving, family and other social gatherings, symbolic decoration, New Year Tree, Father Frost coming, feasting etc.

Gift-giving, family and other social gatherings, symbolic decoration, feasting etc.

Dedicated to veterans and service personnel of the Russian Armed Forces, colloquially known as Men's Day (and commonly treated) as a celebration of all men.

Giving colleagues and loved ones flowers and gifts and demonstrating respect and support

Marches and barbecues.
Military parades and festive fireworks, an organized procession to the Tomb of the Unknown Soldier with a wreath-laying, festive processions and fireworks

HOW TO ARRIVE TO KIROV

1

PLANE

Most probably, you will arrive in Russia by plane.



Moscow Sheremetyevo International Airport is one of the largest airports in the country. It is located 11 km north-west Moscow with the flow rate of 20 mil passengers a year.

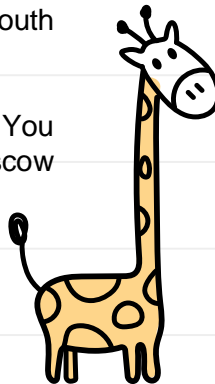
Moscow Domodedovo International Airport is located 22 km south Moscow with the flow rate of 60 mil passengers a year.

Both airport districts are provided with multi-directional transport hubs. You can easily take a bus, a taxi or Aeroexpress to get to the centre of Moscow and then – to railway stations.

2

TRAIN

Trains are the cheapest way to get to Kirov from Moscow. In Moscow, there are 9 railway stations. From 2 of them – **Yaroslavskiy** and **Vostochniy** railway stations - you can successfully reach Kirov. Search for the timetable of the trains is on www.rzd.ru



PUBLIC TRANSPORT

3



As you arrive at **Kirov railway station**, you can take a bus No. 23, 67, 90 or a trolleybus No. 1 or order a taxi via mobile app. YandexGo. Choose the address of the university: Karl Marx Str, 112.





TO-DO LIST



Congratulations! Now you`ve arrived at Kirov! Note what you are obliged to do next!

- Get registered in Visa and Registration department
Karl Marx Str 112, room 105, 1st floor
Provide the following documents:
 - Negative COVID test results
 - Passport
- Get acknowledged with rules of accommodation of living in the dormitory
- Get a permission to enroll in the dormitory
- Sign a contract on living in the dormitory and move in your room
- Register with the migration authorities at the place of your residence
- Sign a contract on education in the Dean`s Office of your specialty
- Find out about your academic group and timetable, join group chats

05

Upon arrival at Kirov



Karl Marx Str 112, room 105, 1st floor



USEFUL CONTACTS



DEPARTMENT OF INTERNATIONAL RELATIONS consists of two offices:

Office for Visa and Registration Support is in charge of visas and deals with all migration papers required during your stay in Russia.

Karl Marx Str 112, room 105

visa@kirovgma.ru

+7 8332 374955

Office for Coordination of International Affairs is in charge of any international activities and collaboration as well as for students recruiting.

Karl Marx Str 112, room 104

oms@kirovgma.ru

+7 8332 374955



USEFUL CONTACTS



DEAN`S OFFICE OF THE FACULTY OF FOREIGN STUDENTS



Dean`s Office of the Faculty of Foreign Students is responsible for all the educational issues

Dean

Karl Marx Str 112, room 117

foreign@kirovgma.ru

+7 8332 370282



Document manager

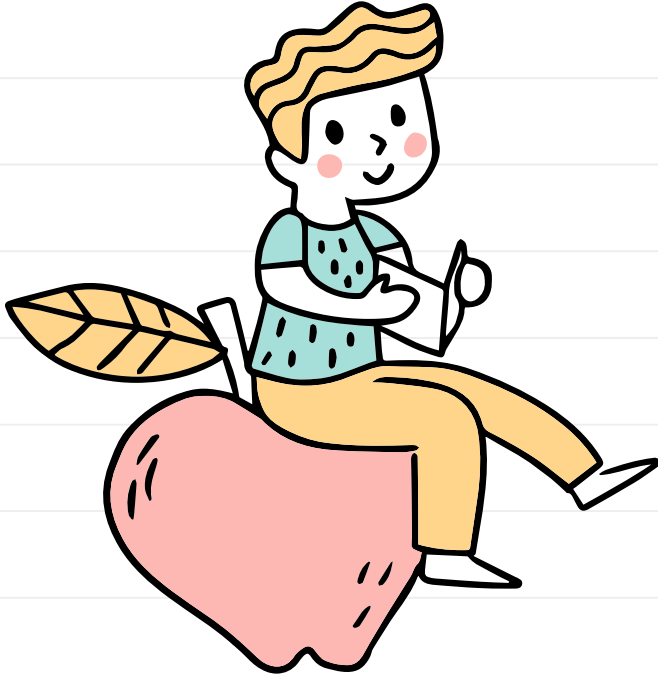
Karl Marx Str 112, room 116

foreign2@kirovgma.ru

+7 8332 374868



See you soon!



Still have any questions?

admission@kirovgma.ru

+7 912 710 0270

<https://eng.kirovgma.ru>

Notes